



# GAT MONTHLY MEMBERSHIP PROGRESS REPORT

Results as of: 9/30/2022

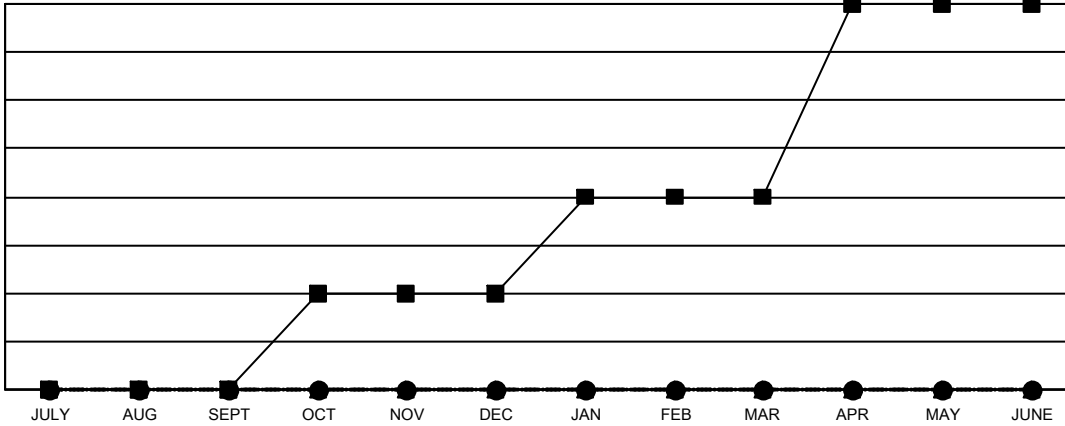
Multiple District 43

LOCATION: KENTUCKY

Clubs			
RESULTS FOR 2022-2023			
QUARTER	NEW CLUB GOAL	NEW CLUBS	DROPPED CLUBS
JULY/AUG/SEPT	0	0	3
OCT/NOV/DEC	1	0	0
JAN/FEB/MAR	1	0	0
APR/MAY/JUNE	2	0	0

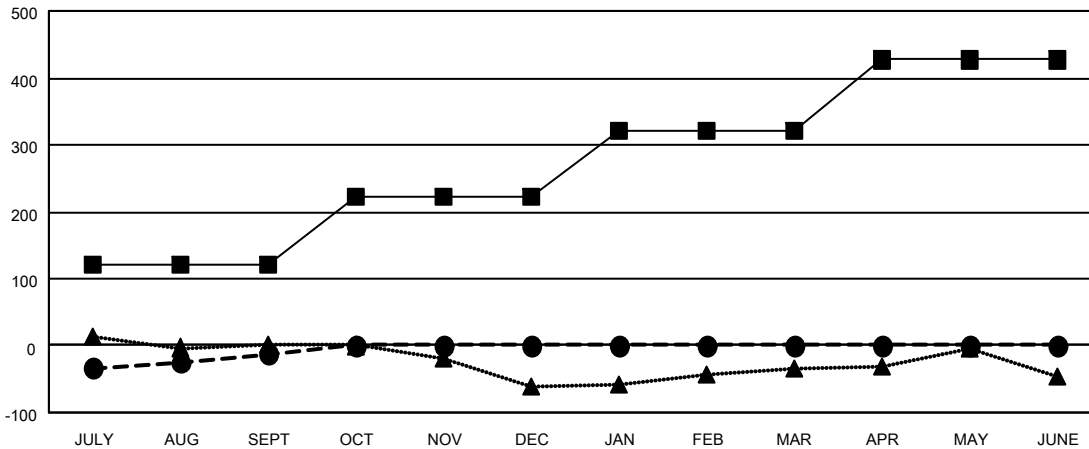
Members			
RESULTS FOR 2022-2023			
QUARTER	MEMBER GROWTH NET GOAL	MEMBER GROWTH ACTUAL	DROPPED MEMBERS ACTUAL (including transfers)
JULY/AUG/SEPT	122	116	109
OCT/NOV/DEC	100	0	0
JAN/FEB/MAR	100	0	0
APR/MAY/JUNE	105	0	0

GOALS AND ACTUAL NEW CLUBS CUMULATIVE



- CURRENT YEAR GOALS FOR NEW CLUBS
- CURRENT YEAR ACTUAL NEW CLUBS
- ▲- LAST YEAR ACTUAL NEW CLUBS

GOALS AND ACTUAL MEMBERS CUMULATIVE



- MEMBER GROWTH NET GOAL
- MEMBER GROWTH ACTUAL
- ▲- LAST YEAR MEMBERSHIP ACTUAL

<b>DROPPED CLUBS: 3</b>	<b>38 CLUBS OF 150 ADDED 1 OR MORE NEW MEMBERS</b>	<b>GENDER DISTRIBUTION</b>
<b>DROPPED MEMBERS</b>		MALE 2,396 (65.29%)
DECEASED 16		FEMALE 1,263 (34.41%)
CLUB CANCELLED 0		NON BINARY 0 (0.00%)
OTHER 93		PREFER NOT TO ANSWER 11 (0.30%)
<b>TOTAL 109</b>	<a href="#">CLICK HERE FOR CUMULATIVE MEMBERSHIP DATA</a>	<b>TOTAL FAMILY UNIT MEMBERS 746</b>
		<b>FAMILY MEMBERS PAYING HALF DUES 385</b>